

Enterprise Data Collection Platform

NEXFORM

NEXFORM simplifies data collection on the go using smartphones or tablets, eliminating manual data entry. It provides a powerful paperless solution for data collection and management. We strive to offer unique features in every application to help organizations effectively manage their data in a sustainable manner.



Central Form & Data Management

- Design, publish and fill-in in web browser, PC or mobile apps
- Support multiple web form style, including responsive web, PDF-style & mobile form
- Support unlimited submissions
- Support application-layer encryption & data protection

Form Builders

- Provide on-premises or private cloud deployment
- Support 3rd party system integration
- Provide file storage and management
- Provide data export
- Provide real-time data integration

Account Management

- Support user access control
- Support user creation and management
- Support DMS user group definition
- Support password resetting
- Support user group in tree structure

Responsive Interface

Integration with QR Codes



29/F, Tower 2, The Millennity, 98 How Ming Street,
Kwun Tong, Kowloon, Hong Kong



Website



Facebook

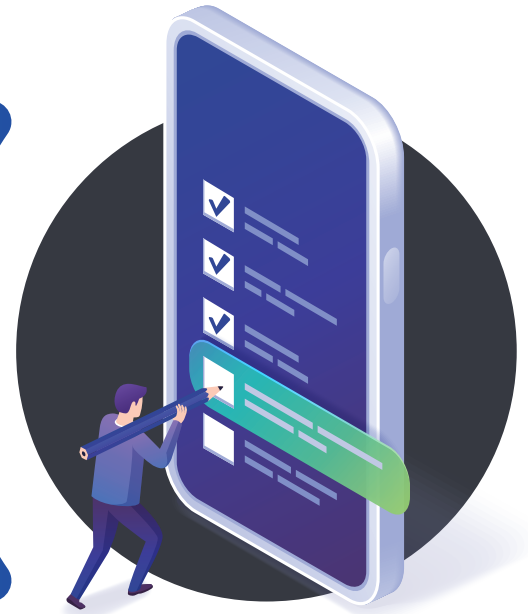


LinkedIn

[/nexifyhk](#)
[/nexify-limited/](#)
<https://www.nexify.com.hk>

Comprehensive Approach for Management Efficiency

- Enterprise-level security: Secure and help you to fulfill the security requirements for data collection
- Convenient: Access data from anywhere
- Extensible: Allow seamless integration with backend workflow system



Data Protection

— Maximum Security and Control



Application-Level Encryption

Protect binary files stored on the server with AES-256 encryption provided by NexTore; NexForm can also be integrated with any Key Management System or HSM.



Form Data

Safeguard your data by encrypting field values before storing them in the database.



Audit Trail

Record all user and administrator actions with timestamp, target object, actioner ID, action type, and the details of changed fields



Role-Based Access Control

Implement access control based on user accounts and roles to manage permissions for form design, form submission, form data processing, dashboard access, and more.

Increased Productivity

Improve mobility by enabling users to access centralized data stores from any location and at any time.

Paperless

Minimize expenses by eliminating the need for storing and managing large volumes of paper records.

Integrated Work Processes

Integrate with backend workflow system to achieve greater efficiency in data collection.

Enhanced Features

Capture data, pictures, signatures, location information, etc., using a mobile device.